



Annadale

MICKLEHAM

House & Land Package \$822,812*

BEDROOM 4

BATHROOM 2

GARAGE 2

Facade colours and materials shown may not be available due to land estate design guidelines. Refer to your Henley new home consultant for clarification. Price excludes tiles, stone and/or full render to facade treatment if shown, timber windows, landscaping, fencing, driveway, decking, planter box and decorative lights or any change required by Developer to facade.



Emperor 48

Lot 1213 - Annadale

Land Size: 571m²

Frontage: 19.59m



Henley

Phone: 98254474
annadale.com.au

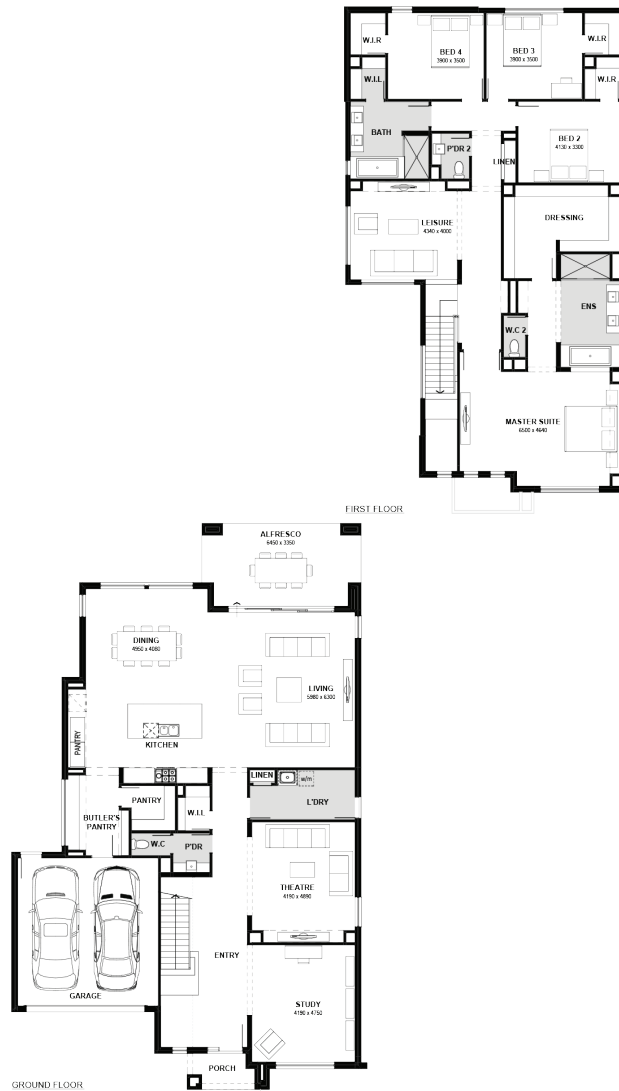
Contact our Estate Manager:
Levan Lu 0467 999 962



MOREMAC
PROPERTY GROUP

Annadale

MICKLEHAM



Inclusions

- Fixed Site Costs[^]
- Carpet and Timber Look Flooring~
- 20mm Caesarstone benchtops throughout (Exc. Laundry)
- Colorbond® or tiled roof
- Double Glazed Windows+
- Stainless Steel SMEG Appliances Inc. Dishwasher
- Estate Guidelines#



*Home price based on a standard home, standard inclusions, Henley's preferred siting and Henley's preferred building surveyor. The price does not include additional costs should land titles be delayed, changes required by Developer which are discretionary or cannot be identified from Estate Guidelines at the time of pricing. [^]Fixed site costs do not include costs associated with footing probes where required and costs resulting from the probe. Fixed site costs are offered on the proviso that the Developer provides (1) level 1 compaction report for the lot that is no more than 24 months old (2) a survey of land that matches the land engineering submitted to Henley with the fixed site cost application. ~Flooring supplied is Category 1 Carpet, and Category 1A Nordic Timber Laminate as per Floor Covering Layout available from your Sales Consultant. +Double glazed windows excludes all doors (entry doors, stacker doors, bi-fold doors, sliding doors and half-light/ full light laundry doors, all door frames (sidelights), butt jointed corner windows and picture windows to living areas. Allowance for Estate Guidelines# is based on items that can be identified in the Estate Guidelines at the time of fixing price and does not include discretionary items. Internal stock images may be used when actual image for the design is not available. Photography and illustrations to be used as a guide. Additional cost fixtures & fittings may be shown.

Phone: 98254474
annadale.com.au

Contact our Estate Manager:
Levan Lu 0467 999 962

 MOREMAC
PROPERTY GROUP

WHILE BEST ENDEAVOURS HAVE BEEN USED TO PROVIDE INFORMATION IN THIS PUBLICATION THAT IS TRUE AND ACCURATE, ANNADALE, ITS CONSULTANTS, AGENTS AND RELATED ENTITIES ACCEPT NO RESPONSIBILITY AND DISCLAIM ALL LIABILITY IN RESPECT TO ANY ERRORS OR INACCURACIES IT MAY CONTAIN. PROSPECTIVE PURCHASERS SHOULD MAKE THEIR OWN ENQUIRIES TO VERIFY THE INFORMATION CONTAINED HEREIN.