



Annadale

MICKLEHAM

House & Land Package \$606,000*

BEDROOM 4

BATHROOM 2

GARAGE 2

Images for illustrative purposes only & may depict upgrade options available at additional charges such as lighting, window furnishings, timber look garage door & timber windows. Pricing also excludes features not supplied by Carlisle, inc fencing, landscaping, letterbox, decking & driveway. Façade details inc entry door, window sizes & placements may vary between house types & sizes. Refer to working drawings for specific locations and sizes.



Beaumont 25

Lot 1832 - Annadale

Land Size: 420m²

Frontage: 14m



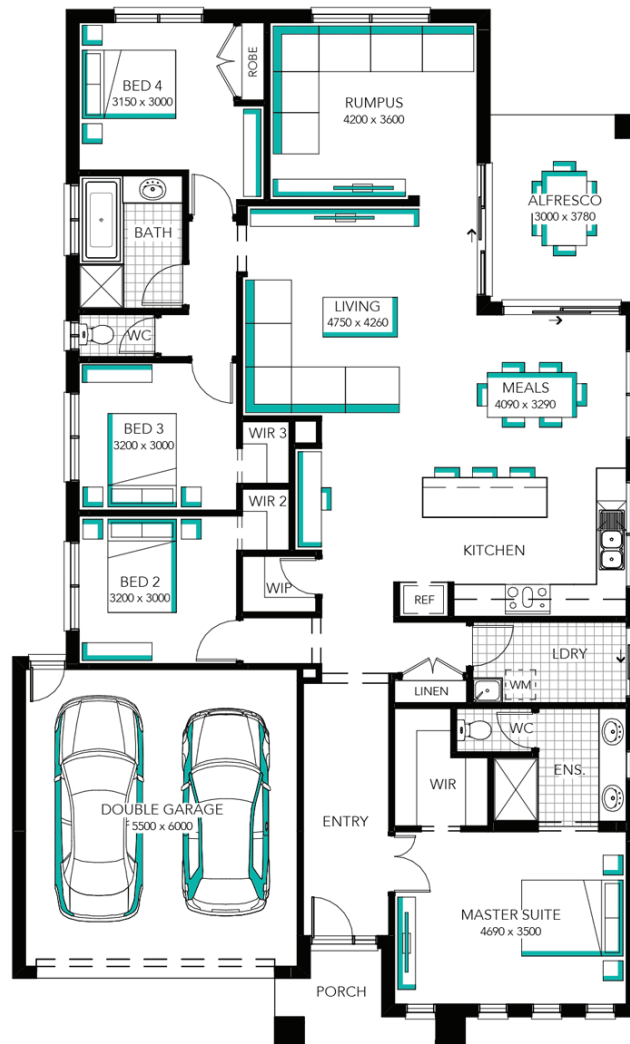
Phone: 98254474
annadale.com.au

Contact our Estate Manager:
Clive Ackerman 0467 999 962

 MOREMAC
PROPERTY GROUP

Annadale

MICKLEHAM



Inclusions

- FIXED PRICE SITE COSTS AND CONNECTIONS
- DEVELOPER AND COUNCIL REQUIREMENTS
- CLASSIC RANGE SLIM PROFILE ROOF TILES
- OR COLORCOTE METAL ROOF TO SINGLE STOREY HOMES
- ZONED SECURITY ALARM SYSTEM
- WHITE LED DOWNLIGHTS TO ENTRY AND LIVING AREAS (AS PER ELECTRICAL PLAN)



*Price current as of 22/01/2019. Hebel homes may be smaller than dimensions shown on the floorplan due to the external wall thickness; see working drawings for Hebel home dimensions. Confirm land prices and availability prior to purchase. Subject to developer and council approval. Price does not include any stamp duty, government, legal or bank charges. Alterations may incur additional charges. Images for illustrative purposes only & may depict upgrade options available at additional charges such as lighting, window furnishings, timber look garage door & timber windows. Pricing also excludes features not supplied by Carlisle, inc fencing, landscaping, letterbox, decking & driveway. Façade details inc entry door, window sizes & placements may vary between house types & sizes. Refer to working drawings for specific locations and sizes. Carlisle reserves the right to withdraw or amend pricing, inclusions and promo without notice. See a Sales Consultant or visit carlislehomes.com.au/disclaimer/ for further details. ©2019 Carlisle Homes Pty Ltd. Registered Building Practitioner CDB-U50143.

Phone: 98254474
annadale.com.au

Contact our Estate Manager:
Clive Ackerman 0467 999 962

 MOREMAC
PROPERTY GROUP

WHILE BEST ENDEAVOURS HAVE BEEN USED TO PROVIDE INFORMATION IN THIS PUBLICATION THAT IS TRUE AND ACCURATE, ANNADALE, ITS CONSULTANTS, AGENTS AND RELATED ENTITIES ACCEPT NO RESPONSIBILITY AND DISCLAIM ALL LIABILITY IN RESPECT TO ANY ERRORS OR INACCURACIES IT MAY CONTAIN. PROSPECTIVE PURCHASERS SHOULD MAKE THEIR OWN ENQUIRIES TO VERIFY THE INFORMATION CONTAINED HEREIN.